

# MARSH®

## Differential Gauges



### Description

Bourdon tube differential gauge Models BB/DUP  
BS/DUP

According to DIN EN 837-1 Nominal sizes, 100 and  
160 mm Accuracy: Class 1

### Features

- Rugged stainless steel case construction
- Bayonet locking case and bezel
- Protection to IP65
- Usable at full scale
- Liquid fillable case
- Over-range protection 130% Ranges

### Ranges

- 0 - 600 mbar... up to 0- 1000bar
- 0 - 10psi... Up to 0 -15,0000 psi

### Applications

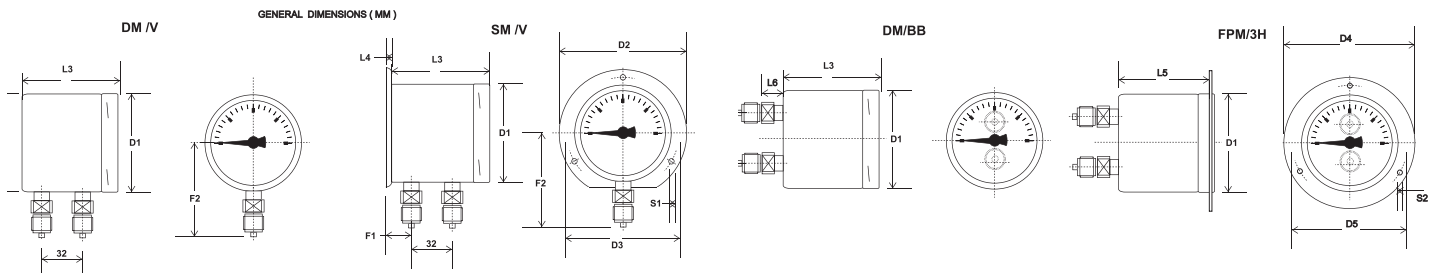
Petrochemical and chemical Pressure drops across  
filters Fire industry apparatus Machine and appara-  
tus construction

Specifications:	BB / DUP	BS / DUP
Dial Size	100	160
Construction	Flush fitting bayonet locking case and bezel.	
Measuring Element	C shaped bourdon tube	
Ranges {bar}	0,6. 1. 1,6. 2,5. 4. 6. 10. 16. 25. 40 . 60 . 100 . 160 . 250 . 400 . 600 . 1000 -1/0. -1/0,6. -1/1,5. -1/3. -1/5. -1/9. 0,6.	
Over-range limit	130% full scale, short periods	
Process Connection	1/4bsp, 3/8bsp, 1/2bsp according to EN837 1/4npt, 1/2npt, according to ANSI/ASME B1.20.1	
Material Construction		
Process Connection	Brass, Stainless steel AISI 316L	
Bourdon Tube	Phosphor bronze, Stainless steel AISI 316L	
Case / Bezel Ring	Stainless steel AISI 304L	
Window	Instrument glass, optional, laminated safety glass, acrylic glass.	
Dial	Aluminium, black figures on white, optional, steel, other colours	
Pointer	Aluminium, 1 black, 1 RED, optional, other co- lours	
Movement	Brass	
Accuracy	Class 1 (1% F.S.D.)...optional class 0.6 (0.6%)	
Permissible	Degree C	
Ambient Temp.	-25,+60	
Process Temperature	-30, max,+100	
Storage Temperature	-40,+60	
Temperature Effect	max, 0,3% / 10 Deg C	
Protection	EN 60 529 IP54 (dry) IP65 (fillable and filled)	
Filling Liquid	Glycerine (GL) Silicone (SI)	
Mountings	Direct bottom, direct back, surface, flush panel, panel fixing	
Weight dry / filled {kg}	1.2 / 2.0	2.3 / 4.2
Accessories	Diaphragm seals, special connections, other designs to customer specs	

All specifications are subject to change without notice

	D1	D2	D3	D4	D5	L1	L2	L3	L4	L5	L6
100	101	132	118	132	118	52	52	79	5.5	20	75
160	161	192	178	192	178	52	52	79	5.5	20	75

	L7	L8	L9	L10	L11	L12	F1	F2	F3	F4	S1	S2	SW
100	40	4	47	6	47	30	15	85	40	32	6	6	17
160	40	4	47	6	47	30	15	114	40	32	6	6	17



**MARSH BELLOFRAM®**  
Group of Companies

9 Castle Park Queens Drive, Nottingham NG2 1AH England

Tel: (44) 115 993 3300 • Fax: (44) 115 993 3301 • e-mail: bellofram@aol.com • www.marshbellofram.com

LTUK09018