

MARSH[®]

Hygienic Diaphragm Seals



Description

These Hygienic seals are manufactured with a 316 stainless steel body and diaphragm which is flush welded to meet the needs of the food, dairy, brewing and other industries, that requires no unnecessary contamination from bacteria traps.

The design is free of dead space, making the gauges easy to clean and hygienic.

Transmission of pressure to the gauge, from the seal, is from a nontoxic liquid, (approved food oil is our standard) or silicon fluid. The gauges can be fitted directly or remotely, via a capillary tubing, maximum length 10 metres.



Transmission Fluid

Glycerine	-10 to + 70 °C
White Food Oil	-20 to + 140 °C F.D.A. approved
Silicon Fluid	DC 200/10; -30 to +180 °C

Fittings

IDF RJT SMS DIN11851

Above fittings are available in either a fixed, 316 stainless steel male seal, or a 316 stainless steel seal with a 304 stainless steel running nut. Nominal sizes 1.5" & 2.0", others on request.

HOMOGENIZERS

Available with or without clamping block, with either a button diaphragm or a fish tale tube.

THREADED SEAL

BSP or NPT, male, or female thread Sizes -3/4", to 2".

TRI-CLAMP

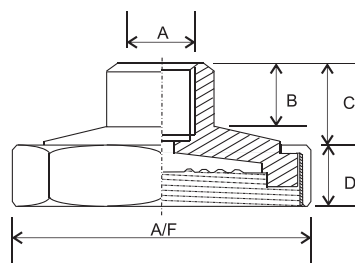
A quick-release seal. Available with or without the clamp and/or bottom ferrel. Sizes, -1 - 1.5" & 2".

FISH TAIL SEAL

316 stainless steel tube seal, fittings available; 1/2", 3/4", BSP male fixed or swivelling, 1" BSP female swivelling nut.

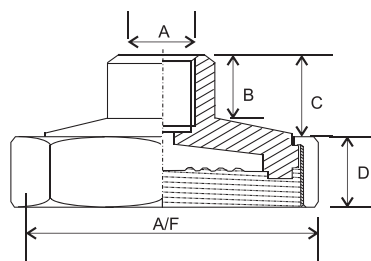
PAPER SEAL

Standard with loose flange fitting, or specials, also fixed flange machined from solid.



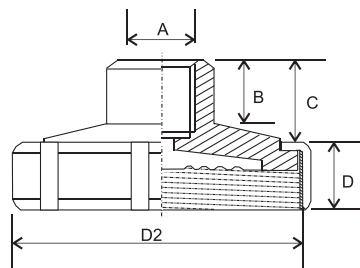
HY/RJT/F

Size	A	B	C	D	A/F
1.5	1/2G	10	16	22	65
2	1/2G	10	16	25	76



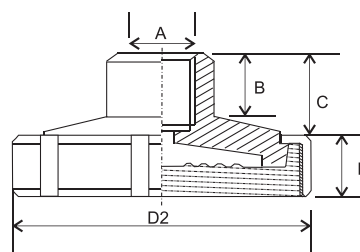
HY/IDF/F

Size	A	B	C	D	A/F
1.5	1/2G	10	16	30	60
2	1/2G	10	16	30	70



HY/SMF/F

Size	A	B	C	D	D2	SLOTS
1.5	1/2G	10	16	25	74	5 x 8mm
2	1/2G	10	16	26	84	5 x 8mm



HY/SMF/F

Size	A	B	C	D	D2	SLOTS
1.5	1/2G	10	16	25	72	4 x 10mm
2	1/2G	10	16	26	92	4 x 10mm

Accuracy

±1% @ 20 °C for direct reading

±1.5% @ 20 °C for remote reading

Working Temperature	Fitting	Final Accuracy
+ 15 to +25 °C	Direct Fitting	1.0%
	Remote Fitting	1.5%
+ 5 to +15 °C +25 to +50 °C	Direct Fitting	1.5%
	Remote Fitting	2.0%
-30 to +15 °C +25 to +50 °C	Direct Fitting	2.5%
	Remote Fitting	3.0%
+100 to +250 °C	Direct Fitting	3.0%
	Remote Fitting	3.5%

MARSH BELLOFRAM[®]
Group of Companies

9 Castle Park Queens Drive, Nottingham NG2 1AH England

Tel: (44) 115 993 3300 • Fax: (44) 115 993 3301 • e-mail: Creynolds@marshbellofram.com • www.marshbellofram.com LTUK09011