

# MARSH®

## Liquid Filled Gauges



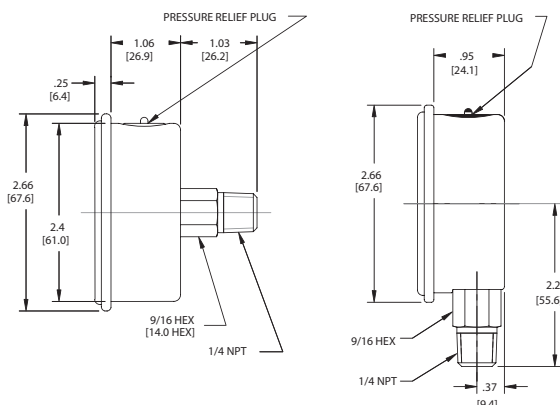
### 63 mm Liquid Filled Gauges

Marsh Instruments Liquid Filled Gauges are designed to perform in rugged applications and harsh environmental conditions - especially where pulsation and vibration are a problem. Liquid Filled Gauges offer a significant cushioning and dampening effect, reducing pointer flutter and internal gauge damage; also lubricating the internals, and reducing corrosion. All stainless steel Liquid Filled Gauges feature a ventable top fill plug for pressure relief and ease of venting after installation. The hermetically sealed construction reduces the chance of leaks, and makes field filling an easy option.

Typical applications include refineries, chemical plants, offshore platforms, oil rigs, marine applications, general industrial application and OEM processes.

- Brass or Stainless Steel Internals
- Ranges to 10,000 PSI
- Glycerine filled for dampening

Specifications	
Standards	EN837-1
Case Size	63MM
Construction	304 ST/ST Case with Brass or ST/ST Internals
Entry	Bottom or Back or U Clamp
Connection	NPT-BSPP-BSPT-1/8-1/4-3/8-1/2
Range	from Vac to 15000 Psi
Dial Standard	PSI / BAR
Accuracy	CI 1.6
Window	Acrylic - Safety Glass as an option
Fill medium	Glycerine , Silicone as an option
Temp specs	0 TO 60 deg C Standard
Vent	Filler plug / blow out vent



### 63 mm Liquid Filled Gauges

↑	↑	↑	↑	Case
<b>J</b>				ST/ST
				Mounting
	<b>76</b>			Brass Bottom
	<b>64</b>			Brass Back
	<b>72</b>			Brass Panel Mount
	<b>78</b>			All ST/ST Bottom
	<b>66</b>			All ST/ST Back
	<b>74</b>			All ST/ST Panel
				Ranges
	<b>05</b>			30 " Vacuum
	<b>40</b>			15 PSI / 1 BAR
	<b>42</b>			30 PSI / 2 BAR
	<b>46</b>			60 PSI / 4 BAR
	<b>48</b>			100 PSI / 7 BAR
	<b>52</b>			160 PSI / 11 BAR
	<b>54</b>			200 PSI / 14 BAR
	<b>58</b>			300 PSI / 20 BAR
	<b>60</b>			400 PSI / 27 BAR
	<b>64</b>			600 PSI / 40 BAR
	<b>72</b>			1000 PSI / 70 BAR
	<b>74</b>			1500 PSI / 100 BAR
	<b>76</b>			2000 PSI / 140 BAR
	<b>78</b>			3000 PSI / 200 BAR
	<b>80</b>			4000 PSI / 275 BAR
	<b>82</b>			5000 PSI / 344 BAR
	<b>84</b>			6000 PSI / 413 BAR
	<b>90</b>			10,000 PSI / 690 BAR
				Connection & Options
	<b>PM/999</b>			Brass, any connection
	<b>P/NPT</b>			All ST/ST in NPT Filled
	<b>P/BSP</b>			All ST/ST in BSP Filled
	<b>SG</b>			Safety Glass
	<b>RP</b>			Red Pointer
	<b>RC</b>			Rubber Cover
	<b>001</b>			Speical dial / range

Some configurations may not be possible, please consult factory.

**MARSH BELLOFRAM®**  
Group of Companies

9 Castle Park Queens Drive, Nottingham NG2 1AH England  
Tel: (44) 115 993 3300 e-mail: bellofram@aol.com  
Fax: (44) 115 993 3301 www.marshbellofram.com